

# Populating the USB Components on the EDB9301 Development Board

## 1. Introduction

This document provides the information needed to populate the USB area of the EDB9312 board. By default, the USB components are not installed at time of PCB assembly. This document has a short Bill of Material (BOM) in Table 1 that identifies the part numbers and reference designators of the components required for USB operation. Figure 1 shows the component placement on the PCB. The part numbers in the BOM are all available from DigiKey ([www.digikey.com](http://www.digikey.com)) as well as a variety of other component sources.

## 2. Instructions

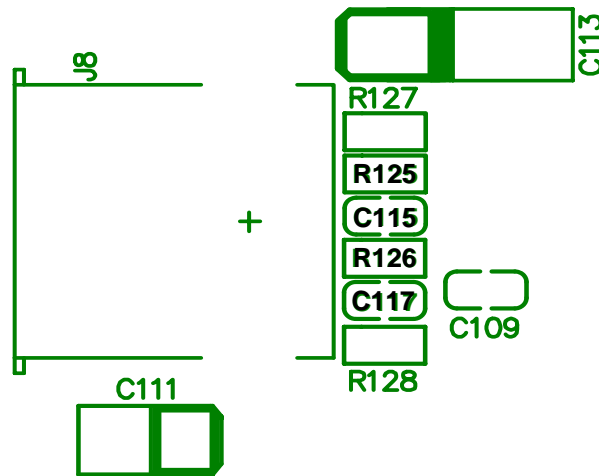
Refer to the CD for the board schematics. The schematic will show the reference designators and the value for the parts. Located at the bottom of page 2 of the EDB9301 schematics is the USB circuit. The BOM for the USB circuit is at the end of this document.

## WARNING

The customer is allowed to populate the USB portion of the EDB9301 circuit board without voiding any warranty only as long as appropriate anti-static precautions, proper soldering techniques and professional standards of workmanship are followed.

Table 1. USB Circuit Bill of Material (BOM)

Item	Quantity	Footprint	Description	Part Number	Part Manufacturer	Reference Designator
1	1	THOLE	Connector, USB, Right Angle, Type A	787616-1	AMP	J8
2	2	0603	Resistor, 15K, 1/10W, 5%	ERJ-3GEYJ153V	Panasonic	R127,R128
3	2	0603	Resistor, 15 Ohm, 1/10W, 5%	ERJ-3GEYJ150V	Panasonic	R125,R126
4	2	0603	Capacitor, 47pF, 50V, NPO	ECJ-1VC1H470J	Panasonic	C115,C117
5	1	0603	Capacitor, 0.1uF, 25V, XR7	ECJ-1VB1E104K	Panasonic	C109
6	1	Case B	Capacitor, 10uF, 16V, Tantalum	T491B106K016AS	Kemet	C111
7	1	Case C	Capacitor, 100uF, 6.3V, Tantalum	EEJ-L0JC107R	Panasonic	C113

**Figure 1. Component Placement**


Revision	Date	Changes
1	13 April 2004	Initial Release
2	Jan 2005	Changed item 7 from 100uF, 100V, XR7 to 100uF, 6.3V, Tantalum.

## Contacting Cirrus Logic Support

For all product questions and inquiries contact a Cirrus Logic Sales Representative.  
To find one nearest you go to [//www.cirrus.com](http://www.cirrus.com)

### IMPORTANT NOTICE

Cirrus Logic, Inc. and its subsidiaries ("Cirrus") believe that the information contained in this document is accurate and reliable. However, the information is subject to change without notice and is provided "AS IS" without warranty of any kind (express or implied). Customers are advised to obtain the latest version of relevant information to verify, before placing orders, that information being relied on is current and complete. All products are sold subject to the terms and conditions of sale supplied at the time of order acknowledgment, including those pertaining to warranty, indemnification, and limitation of liability. No responsibility is assumed by Cirrus for the use of this information, including use of this information as the basis for manufacture or sale of any items, or for infringement of patents or other rights of third parties. This document is the property of Cirrus and by furnishing this information, Cirrus grants no license, express or implied under any patents, mask work rights, copyrights, trademarks, trade secrets or other intellectual property rights. Cirrus owns the copyrights associated with the information contained herein and gives consent for copies to be made of the information only for use within your organization with respect to Cirrus integrated circuits or other products of Cirrus. This consent does not extend to other copying such as copying for general distribution, advertising or promotional purposes, or for creating any work for resale.

CERTAIN APPLICATIONS USING SEMICONDUCTOR PRODUCTS MAY INVOLVE POTENTIAL RISKS OF DEATH, PERSONAL INJURY, OR SEVERE PROPERTY OR ENVIRONMENTAL DAMAGE ("CRITICAL APPLICATIONS"). CIRRUS PRODUCTS ARE NOT DESIGNED, AUTHORIZED OR WARRANTED FOR USE IN AIRCRAFT SYSTEMS, MILITARY APPLICATIONS, PRODUCTS SURGICALLY IMPLANTED INTO THE BODY, AUTOMOTIVE SAFETY OR SECURITY DEVICES, LIFE SUPPORT PRODUCTS OR OTHER CRITICAL APPLICATIONS. INCLUSION OF CIRRUS PRODUCTS IN SUCH APPLICATIONS IS UNDERSTOOD TO BE FULLY AT THE CUSTOMER'S RISK AND CIRRUS DISCLAIMS AND MAKES NO WARRANTY, EXPRESS, STATUTORY OR IMPLIED, INCLUDING THE IMPLIED WARRANTIES OF MERCHANTABILITY AND FITNESS FOR PARTICULAR PURPOSE, WITH REGARD TO ANY CIRRUS PRODUCT THAT IS USED IN SUCH A MANNER. IF THE CUSTOMER OR CUSTOMER'S CUSTOMER USES OR PERMITS THE USE OF CIRRUS PRODUCTS IN CRITICAL APPLICATIONS, CUSTOMER AGREES, BY SUCH USE, TO FULLY INDEMNIFY CIRRUS, ITS OFFICERS, DIRECTORS, EMPLOYEES, DISTRIBUTORS AND OTHER AGENTS FROM ANY AND ALL LIABILITY, INCLUDING ATTORNEYS' FEES AND COSTS, THAT MAY RESULT FROM OR ARISE IN CONNECTION WITH THESE USES.

Cirrus Logic, Cirrus, and the Cirrus Logic logo designs are trademarks of Cirrus Logic, Inc. All other brand and product names in this document may be trademarks or service marks of their respective owners.

Microsoft and Windows are registered trademarks of Microsoft Corporation.

Microwire is a trademark of National Semiconductor Corp. National Semiconductor is a registered trademark of National Semiconductor Corp.

Texas Instruments is a registered trademark of Texas Instruments, Inc.

Motorola is a registered trademark of Motorola, Inc.

LINUX is a registered trademark of Linus Torvalds.